



2024 PRODUCT CATALOG



Danielle
McEwan



Kyle
Troup

ION™ PRO

Color: Navy/Carbon/Steel
Coverstock: TX-16™ Hybrid Reactive
Factory Finish: 4000-grit Abralon®
Fragrance: Kiwi Tart
Maintenance: Reacta Clean™
Weights: 12 - 16 lbs.
SKU: VIP



ELEMENT™ TOUR A.I. CORE

	16 lb	15 lb	14 lb	13 lb	12 lb
RG	2.47	2.47	2.51	2.56	2.58
DIFF	.035	.035	.036	.034	.031
PSA	.013	.014	.010	.011	.009

DNA™ COIL

Color: Scarlet/Persian Blue/Raven
Coverstock: EXO™ Pearl Reactive
Factory Finish: Reacta Gloss™
Fragrance: Orange Pineapple Slush
Maintenance: Reacta Clean™
Weights: 12 – 16 lbs.
SKU: VDC

SUPERCOIL™ CORE

	16 lb	15 lb	14 lb	13 lb	12 lb
RG	2.47	2.47	2.53	2.57	2.59
DIFF	.050	.053	.048	.032	.029
PSA	.021	.023	.020	.010	.008



ABSOLUTE™ POWER

Color: Berry/Tangelo/Steel
Coverstock: R2S™ DEEP Solid Reactive
Factory Finish: 4000-grit Abralon®
Fragrance: Blueberry Orange Cake
Maintenance: Reacta Clean™
Weights: 12 – 16 lbs.
SKU: VAW

SENTINEL™ CORE

	16 lb	15 lb	14 lb	13 lb	12 lb
RG	2.48	2.48	2.54	2.57	2.59
DIFF	.048	.050	.045	.032	.029
PSA	.020	.021	.018	.010	.008





LIGHTNING™ BLACKOUT

Color: Obsidian

Coverstock: ReX™ Pearl Reactive

Factory Finish: Reacta Gloss™

Fragrance: Pineapple Cherry Delight

Maintenance: Reacta Foam™

Weights: 12 – 16 lbs.

SKU: VLG



WARP™ A.I. CORE

	16 lb	15 lb	14 lb	13 lb	12 lb
RG	2.51	2.53	2.55	2.58	2.64
DIFF	.029	.029	.029	.047	.037



VIRTUAL ENERGY™ BLACKOUT

Color: Blackout

Coverstock: ReX™ Pearl Reactive

Factory Finish: Reacta Gloss™

Fragrance: Orange Pop

Maintenance: Reacta Foam™

Weights: 12 – 16 lbs.

SKU: VEK

SHAPE-LOCK™ HD CORE

	16 lb	15 lb	14 lb	13 lb	12 lb
RG	2.48	2.48	2.53	2.57	2.59
DIFF	.048	.052	.050	.032	.029
PSA	.019	.020	.017	.010	.008



SUMMIT™ PEAK

Color: Goldenrod/Mint/Iridium
Coverstock: TX-23™ Pearl Reactive
Factory Finish: Reacta Gloss™
Fragrance: Apple Kiwi Pie
Maintenance: Reacta Clean™
Weights: 12 – 16 lbs.
SKU: VMP



CENTRIPETAL™ HD-A.I. CORE

	16 lb	15 lb	14 lb	13 lb	12 lb
RG	2.46	2.46	2.46	2.59	2.65
DIFF	.056	.056	.056	.045	.035

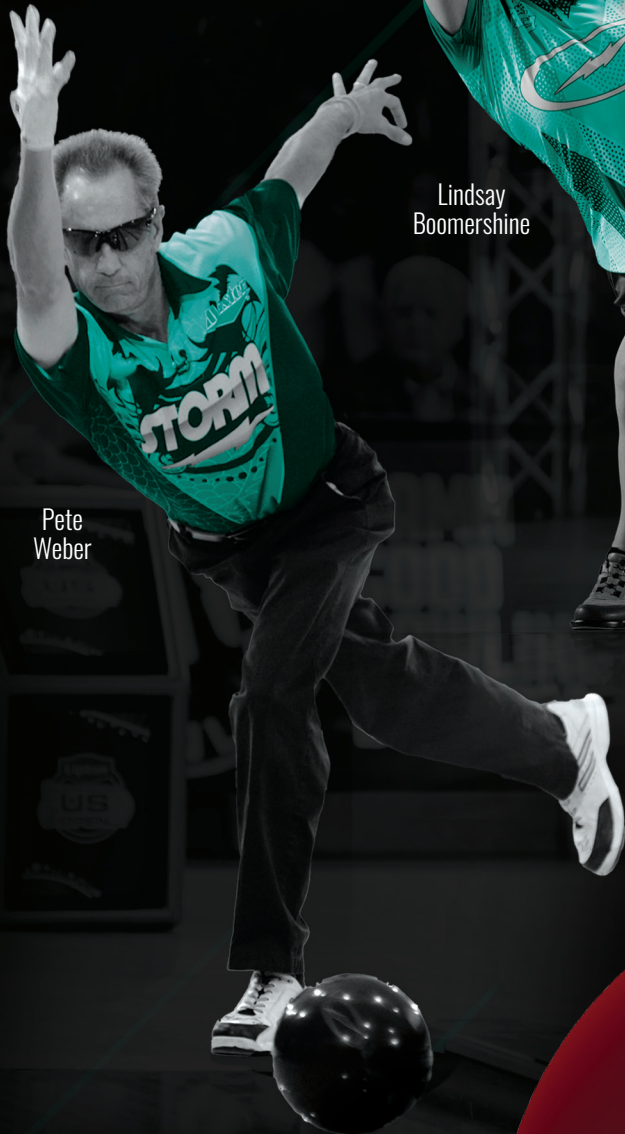
SUMMIT™

Color: Blue/Gold/Silver
Coverstock: TX-23™ Hybrid Reactive
Factory Finish: 3000-grit Abralon®
Fragrance: Snickerdoodle
Maintenance: Reacta Skuff™
Weights: 12 – 16 lbs.
SKU: VNF



CENTRIPETAL™ HD-A.I. CORE

	16 lb	15 lb	14 lb	13 lb	12 lb
RG	2.46	2.46	2.46	2.59	2.65
DIFF	.056	.056	.056	.045	.035



Pete
Weber



Lindsay
Boomershine



Jason
Belmonte

!Q™ TOUR 78/U

Color: Crimson

Coverstock: Controll™ 78 Solid Urethane

Factory Finish: 500-grit Abralon®

Fragrance: n/a

Maintenance: U-Clean U-Score™

Weights: 12 – 16 lbs.

SKU: VLL

C³™ CENTRIPETAL CONTROL CORE

	16 lb	15 lb	14 lb	13 lb	12 lb
RG	2.49	2.49	2.54	2.59	2.65
DIFF	.035	.029	.034	.045	.035



!Q™ TOUR RUBY

Color: Ruby
Coverstock: R2S™ Pearl Reactive
Factory Finish: Reacta Gloss™
Fragrance: Berry Splash
Maintenance: Reacta Clean™
Weights: 12 – 16 lbs.
SKU: VQB

C³™ CENTRIPETAL CONTROL CORE

	16 lb	15 lb	14 lb	13 lb	12 lb
RG	2.49	2.49	2.54	2.59	2.65
DIFF	.035	.029	.034	.045	.035



PHAZE™ II

Color: Red/Blue/Purple
Coverstock: TX-16™ Solid Reactive
Factory Finish: 3000-grit Abralon®
Fragrance: Red Velvet Cake
Maintenance: Reacta Skuff™
Weights: 12 – 16 lbs.
SKU: TZA

VELOCITY™ CORE

	16 lb	15 lb	14 lb	13 lb	12 lb
RG	2.48	2.48	2.53	2.59	2.65
DIFF	.051	.051	.050	.045	.035



!Q™ TOUR EDITION

Color: Midnight Blue
Coverstock: R2S™ Solid Reactive
Factory Finish: 4000-grit Abralon®
Fragrance: Apple Crisp
Maintenance: Reacta Skuff™
Weights: 12 – 16 lbs.
SKU: TQT

C³™ CENTRIPETAL CONTROL CORE

	16 lb	15 lb	14 lb	13 lb	12 lb
RG	2.49	2.49	2.54	2.59	2.65
DIFF	.035	.029	.034	.045	.035





THE ROAD™

Color: Midnight/Carmine
Coverstock: ReX™ Hybrid Reactive
Factory Finish: Reacta Gloss™
Fragrance: Fruit Pop
Maintenance: Reacta Clean™
Weights: 12 – 16 lbs.
SKU: VTR

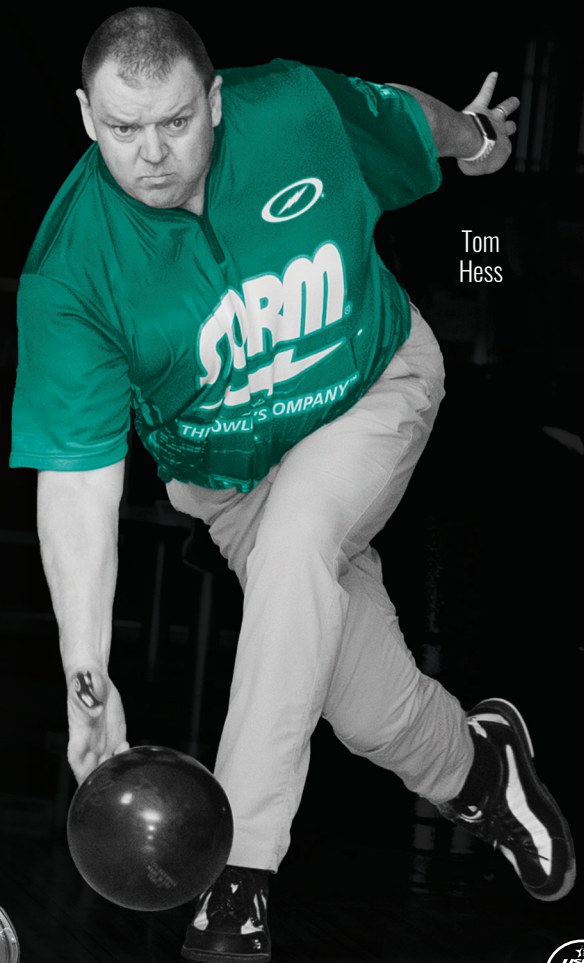


INVERTED FE²™ A.I. CORE

	16 lb	15 lb	14 lb	13 lb	12 lb
RG	2.55	2.55	2.55	2.58	2.64
DIFF	.045	.045	.045	.047	.037



Verity
Crawley



Tom
Hess



PITCH BLACK™

Color: Pitch Black
Coverstock: Controll™ Solid Urethane
Factory Finish: 1000-grit Abralon®
Fragrance: n/a
Maintenance: U-Clean U-Score™
Weights: 12 – 16 lbs.
SKU: TUB



CAPACITOR™ CORE

	16 lb	15 lb	14 lb	13 lb	12 lb
RG	2.56	2.57	2.59	2.61	2.63
DIFF	.023	.022	.022	.021	.021

HY-ROAD™

Color: Black/Ultramarine Blue
Coverstock: R2S™ Hybrid Reactive
Factory Finish: Reacta Gloss™
Fragrance: Combination Berry
Maintenance: Reacta Shine™
Weights: 12 – 16 lbs.
SKU: TTY



INVERTED FE² TECHNOLOGY™

	16 lb	15 lb	14 lb	13 lb	12 lb
RG	2.52	2.57	2.58	2.59	2.65
DIFF	.058	.046	.037	.045	.035





TROPICAL SURGE™

Maintenance: Reacta Clean™
Weights: 10 – 16 lbs.

SURGE™ CORE

	16 lb	15 lb	14 lb	13 lb	12 lb	11 lb	10 lb
RG	2.57	2.58	2.60	2.62	2.64	2.76	2.80
DIFF	.025	.024	.025	.021	.020	.002	.002

PURPLE/NAVY

Coverstock: Reactor™ Solid Reactive
Factory Finish: 2000-grit Abralon®
Fragrance: Fruit Tart
SKU: VPV

MIDNIGHT

Coverstock: Reactor™ Pearl Reactive
Factory Finish: Reacta Gloss®
Fragrance: Ambrosia
SKU: VMD





Norm Duke



Liz Johnson



EMERALD/CHARCOAL

Coverstock: Reactor™ Pearl Reactive
Factory Finish: 1500-grit Polished
Fragrance: Vanilla
SKU: VEC



PURPLE

Coverstock: Reactor™ Pearl Reactive
Factory Finish: 1500-grit Polished
Fragrance: Grape
SKU: VPU



PINK/PURPLE

Coverstock: Reactor™ Pearl Reactive
Factory Finish: 1500-grit Polished
Fragrance: Birthday Cake
SKU: TQI



TEAL/BLUE

Coverstock: Reactor™ Pearl Reactive
Factory Finish: 1500-grit Polished
Fragrance: Wild Leaf Mint
SKU: TQZ



BLACK/CHERRY

Coverstock: Reactor™ Hybrid Reactive
Factory Finish: 1500-grit Polished
Fragrance: Cherry
SKU: TQY





MIX™

Coverstock: U1S™ Pearl Urethane
Factory Finish: 3500-grit Polished
Fragrance: n/a
Maintenance: U-Clean U-Score™
Weights: 6,8,10 – 16 lbs.

TRADITIONAL 3-PIECE CORE

	16 lb	15 lb	14 lb	13 lb	12 lb
RG	2.68	2.69	2.69	2.71	2.72
DIFF	.006	.006	.006	.005	.005

LIME/ROYAL/CUSTARD

SKU: VYC

RED/WHITE/NAVY

SKU: VRW



BLACK/PURPLE/PINK

SKU: VBP



PURPLE/BLUE/WHITE

SKU: VXP



PURPLE/JADE/STEEL

SKU: VXJ



BLACK/SILVER

SKU: TXI



LIGHTNING STORM™ CLEAR

Color: Multi
Coverstock: Clear Polyester
Factory Finish: 3500-grit Polished
Fragrance: n/a
Maintenance: Xtra Clean™
Weights: 12 – 16 lbs.
SKU: VCL

TRADITIONAL 3-PIECE CORE

	16 lb	15 lb	14 lb	13 lb	12 lb
RG	2.68	2.69	2.69	2.71	2.72
DIFF	.006	.006	.006	.005	.005

CLEAR STORM™ WHITE

Color: White/Black
Coverstock: Clear Polyester
Factory Finish: 3500-grit Polished
Fragrance: n/a
Maintenance: Xtra Clean™
Weights: 14 – 16 lbs.
SKU: VCS

TRADITIONAL 3-PIECE CORE

	16 lb	15 lb	14 lb
RG	2.62	2.66	2.73
DIFF	.000	.000	.000

ICE STORM™

Factory Finish: 3500-grit Polished
Fragrance: n/a
Maintenance: Reacta Clean™
Weights: 10, 12 – 16 lbs.

TRADITIONAL 3-PIECE CORE

	16 lb	15 lb	14 lb	13 lb	12 lb
RG	2.68	2.69	2.69	2.71	2.72
DIFF	.006	.006	.006	.005	.005

OCEAN BLUE/WHITE

COVERSTOCK: Hybrid Polyester
SKU: VOB

TEAL/SILVER/GRAPHITE

COVERSTOCK: Pearl Polyester
SKU: VVG





6-BALL ROLLING THUNDER™

- 600 Denier Polyvinyl Fabric
- Side-Loading Midsection and Front-Loading Base for Easy Access to Equipment
- Heavy-Duty Frame and Hardware
- Dual Frame Locking Telescopic Handle with Grip Release
- 3 - 5" Wheels for Increased Mobility and Stability
- Wheel Bearings for Smoother Roll
- Forged Steel Axle
- Detachable 2-Ball Tote Deluxe Bag with Adjustable Non-Slip Shoulder Strap
- Reinforced Zippers
- Large Oval Bolt Zipper Pulls Provide Easy Opening
- Shoe Compartment Accepts up to Men's Size 15
- 2-Color Embroidered Logos
- Dimensions: W:23" x D:14" x H:39"

COLOR // SKU

A. Black/Checkered Red // 67134

B. Checkered Black/Lime // 67133

A



B



4-BALL ROLLING THUNDER™

- 600 Denier Polyvinyl Fabric
- Front-Loading Base for Easy Access to Equipment
- Heavy-Duty Frame and Hardware
- Dual Frame Locking Telescopic Handle with Grip Release
- 3 - 5" Wheels for Increased Mobility and Stability
- Wheel Bearings for Smoother Roll
- Forged Steel Axle
- Detachable 2-Ball Tote Deluxe Bag with Adjustable Non-Slip Shoulder Strap
- Reinforced Zippers
- Large Oval Bolt Zipper Pulls Provide Easy Opening
- Shoe Compartment Accepts up to Men's Size 15
- 2-Color Embroidered Logos
- Dimensions: W:23" x D:14" x H:29"

COLOR // SKU

- A. Black/Checkered Red // 47134
- B. Checkered Black/Lime // 47133





BAGS

4-BALL STREAMLINE™

- 600 Denier Polyvinyl Fabric
- Side-Loading Base with Transparent Windows for Easy Access to Equipment
- Heavy-Duty Construction for Added Support
- Locking Telescopic Handle with Grip Release
- 3 - 4" Wheels for Increased Mobility and Stability
- Detachable 2-Ball Tote Deluxe Bag with Adjustable Non-Slip Shoulder Strap
- Reinforced Zippers and Stitching
- Shoe Compartment Accepts up to Men's Size 15
- Embroidered Logos
- Ample Storage Compartments
- Dimensions: W:18" x D:12" x H:30" (41" fully extended)

COLOR // SKU

Carbon/Black // 4037



3-BALL ROLLING THUNDER™ SIGNATURE

- The birth of an innovative new base
- Strong durability withstands external impact
- High-strength, dual stage aluminum handle that is scratch and impact resistant
- Tightly stitched bottom handle for easy carrying and lifting
- Four 360-degree swivel wheels for free direction change and movement
- Stable ball cap holders allow the balls to stay in place even when upright
- Luxurious logos and smooth fabrics are easy to clean and maintain
- Dimensions: W:14" x D:18" x H:31" (40" fully extended)

COLOR // SKU

A. White/Blue // 37135

B. Black/Opal // 37136



4 WHEEL BASE!



STORM
⚡

STORMBOWLING.COM



Limited Warranty



BAGS

3-BALL ROLLING THUNDER™

- 600 Denier Polyvinyl Fabric
- Heavy-Duty Frame and Hardware
- Dual Stage, Locking, Telescopic Handle With Push Button Release that Extends to 41" With Added Room For Fingers
- 2 - 5" Super Soft Clear-Gum Wheels™ With Wide Tires for Ultimate Traction
- Wheel Bearings for Smoother Roll
- Forged Steel Axle
- Reinforced Zippers
- Internal Zipper Allows Dual Access to Both Shoe and Accessory Compartments
- Transparent Security Flaps Secure Balls While in Transit
- Large Oval Bolt Zipper Pulls Provide Easy Opening
- Shoe Compartment Accepts up to Men's Size 15
- 2-Color Embroidered Logos
- Dimensions: W:14" x D:17" x H:34"

COLOR // SKU

A. Black/Checkered Red // 37134

B. Checkered Black/Lime // 37133



A



B



3-BALL STREAMLINE™

- 600 Denier Polyvinyl Fabric
- Heavy-Duty Frame and Hardware
- Locking Telescopic Handle With Grip Release
- 2 - 4" Wheels for Increased Mobility and Stability
- Oval Bolt Zipper Pulls Provide Easy Opening
- Shoe Compartment Accepts up to Men's Size 17
- Embroidered Logos
- Generous Accessory Storage Compartments
- Dimensions: W:13" x D:14" x H:31"

COLOR // SKU

- A. Black/Blue // 3036
- B. Carbon/Black // 3037
- C. Lime/Grey // 3039
- D. Silver/Black // 3038





BAGS

3-BALL TRAVEL TOTE PRO

- Weighs Less Than 5 lbs.
- Transparent “Easy View” Top
- Embroidered Storm and Oval Bolt Logos
- Strong Metal Hardware Allows for Shoulder Strap or Shoe Bag Attachment to Create a Deluxe Bag
- 600 Denier Polyvinyl Fabric
- Adjustable/Detachable Non-Slip Padded Shoulder Strap
- Reinforced Zippers
- Large Oval Bolt Zipper Pulls Provide Easy Opening
- Concealed Adjustable Fabric Handle for Easy Transportation
- Foam Padded Ball System
- Exclusive Clear Window Pocket Allows for Personalization
- Dimensions: W:8” x D:9” x H:27”
- 90-Day Limited Warranty

COLOR // SKU

A. White/Teal // 3352

B. Grey/Black // 3350

C. Blue/Black // 3351

NEW DESIGN!



3-BALL STREAMLINE TOUR EDITION

- Embroidered Storm and Oval Bolt Logos
- Strong Metal Hardware Allows for Shoe Bag Attachment to Create a Deluxe Bag
- 600 Denier Polyvinyl Fabric
- 2 - 4” Wheels for Increased Mobility and Stability
- Reinforced Zippers
- Large Oval Bolt Zipper Pulls Provide Easy Opening
- Foam Padded Ball System
- Dimensions: W:12” x D:19” x H:31”
- 90-Day Limited Warranty

COLOR // SKU

D. Tour Edition // 36101



3-BALL TOURNAMENT TOTE

- Weighs Less Than 5 lbs.
- Transparent "Easy View" Top
- Embroidered Storm and Oval Bolt Logos
- Strong Metal Hardware Allows for Shoulder Strap or Shoe Bag Attachment to Create a Deluxe Bag
- 600 Denier Polyvinyl Fabric
- Adjustable/Detachable Non-Slip Padded Shoulder Strap
- Reinforced Zippers
- Large Oval Bolt Zipper Pulls Provide Easy Opening
- Concealed Adjustable Fabric Handle for Easy Transportation
- Foam Padded Ball System
- Exclusive Clear Window Pocket Allows for Personalization
- Dimensions: W:9" x D:9" x H:31"
- 90-Day Limited Warranty

COLOR // SKU

A. Dye Sub // 3411

B. Black/Blue // 3409

A



B



STORM SHOE BAG

- 600 Denier Polyvinyl Fabric
- Attaches Easily to the 3-Ball Travel Tote Pro, 3-Ball Tournament Bag and 3-Ball Inline Roller to Create a Deluxe Bag
- Reinforced Zippers
- Embroidered Storm Logos
- Large Oval Bolt Zipper Pulls Provide Easy Opening
- Exclusive Clear Window Pocket Allows for Personalization
- Accepts up to Men's Size 15 Shoes
- 90-Day Limited Warranty

COLOR // SKU

C. Dye Sub // 3511

D. Black/Blue // 3509

E. Black // 3506 - XL - Holds up to Men's size 17

C



D



E





BAGS

2-BALL ROLLING THUNDER™ SIGNATURE

- The birth of an innovative new base
- Strong durability withstands external impact
- High-strength, triple stage aluminum handle that is scratch and impact resistant
- Tightly stitched bottom handle for easy carrying and lifting
- Four 360-degree swivel wheels for free direction change and movement
- Stable ball cap holders allow the balls to stay in place even when upright
- Luxurious logos and smooth fabrics are easy to clean and maintain
- Dimensions: W:13" x D:13" x H:23" (43" fully extended)

COLOR // SKU

A. White/Blue // 27135

B. Black/Opal // 27136

A



B



4 WHEEL BASE!



2-BALL ROLLING THUNDER™

- 600 Denier Polyvinyl Fabric
- Heavy-Duty Frame and Hardware
- Locking Telescopic Handle with Push Button Release
- 2 - 5" Super Soft Clear-Gum Wheels with Wide Tires for Ultimate Traction
- Wheel Bearings for Smoother Roll
- Forged Steel Axle
- Wide Base Promotes Stability
- Reinforced Zippers
- Large Oval Bolt Zipper Pulls Provide Easy Opening
- Large Shoe Compartment Accepts up to Men's Size 15
- 2-Color Embroidered Logos
- Dimensions: W:12" x D:18" x H:23"

COLOR // SKU

- A. Black/Checkered Red // 27134
- B. Checkered Black/Lime // 27133



STORM


STORMBOWLING.COM





BAGS

2-BALL STREAMLINE™

- 600 Denier Polyvinyl Fabric
- Heavy-Duty Frame and Hardware
- Locking Telescopic Handle with Push Button Release
- 2 - 3.5" Wheels for Increased Mobility and Stability
- Oval Bolt Zipper Pulls Provide Easy Opening
- Shoe Compartment Accepts up to Men's Size 15
- Embroidered Logos
- Generous Accessory Storage Compartments
- Dimensions: W:12" x D:15" x H:22"

COLOR // SKU

- A. Lime/Grey // 2039
- B. Carbon/Black // 2037
- C. Silver/Black // 2038
- D. Black/Blue // 2036



A



B



C



D



2-BALL DELUXE TOTE

- 600 Denier Polyvinyl Fabric
- Transparent "Easy View" Back
- Additional Accessory Storage Compartment
- Fixed Adjustable Non-Slip Shoulder Strap
- Reinforced Stitching
- Large Oval Bolt Zipper Pulls Provide Easy Opening
- Shoe Compartment Accepts up to Men's Size 13
- 2-Color Embroidered Logos
- Dimensions: W:16" x D:10" x H:14"
- 1-Year Limited Warranty

COLOR // SKU

A. Black/Checkered Red // 25134

B. Checkered Black/Lime // 25133



2-BALL TOTE

- 600 Denier Polyvinyl Fabric
- Transparent Clear Top
- Fixed Adjustable Non-Slip Shoulder Strap
- Reinforced Stitching
- Large Oval Bolt Zipper Pulls Provide Easy Opening
- 2-Color Embroidered Logos
- Dimensions: W:17" x D:9" x H:8"
- 1-Year Limited Warranty

COLOR // SKU

C. Black/Checkered Red // 26134

D. Checkered Black/Lime // 26133





BAGS

1-BALL RASCAL™ ROLLER

- 400 Denier Polyvinyl Fabric
- Bold and Stylish
- Telescopic Handle
- Internal Shoe Pockets Accept up to Mens Size 15
- 2 - 3" Easy Glide Wheels
- Generous Storage Space
- Reinforced Zippers & Stitching
- Large Oval Bolt Zipper Pulls Provide Easy Opening
- Foam Base for Protection and Support
- 2-Color Embroidered Storm Logo
- Dimensions: W:17" x D:10" x H:20"
- 90-Day Limited Warranty

COLOR // SKU

A. Black/Amethyst // 1134

B. Dye Sub // 1135

C. Black // 1126

D. Black/Pink // 1127*

E. Black/Red // 1128



*A portion of the profits from the purchase of this item will be donated to breast cancer research.

1-BALL FLIP™ TOTE

- 600 Denier Polyvinyl Fabric
- Zippered Accessory Pocket
- External Shoe Compartment Accepts up to Men's Size 15
- Removable Adjustable Non-Slip Shoulder Strap
- Reinforced Zippers and Stitching
- Oval Bolt Zipper Pulls Provide Easy Opening
- Foam Base
- 2-Color Embroidered Logos
- Dimensions: W:14" x D:10" x H:12"
- 90-Day Limited Warranty

COLOR // SKU

- A. Black/ Amethyst // 17140
- B. Dye Sub // 17141
- C. Red // 17130
- D. Blue // 17131
- E. Purple // 17133*
- F. Black // 17134



*A portion of the profits from the purchase of this item will be donated to breast cancer research.

4-BALL CASE BOX TOTE

- 600 Denier Polyvinyl Fabric
- Large Oval Bolt Zipper Pulls Provide Easy Opening
- Reinforced Zippers and Stitching
- Two Handles for Easy Transportation
- Great for Storage and Travel of 4-Ball Case Boxes
- Large Screened Storm Logo
- Dimensions: W:19" x D:19" x H:10"
- 90-Day Limited Warranty

COLOR // SKU
Black // 4500





1-BALL SOLO

- 600 Denier Polyvinyl Fabric
- Accessory Storage Pocket
- Internal Shoe Compartment Accepts up to Men's Size 13
- Adjustable Non-Slip Shoulder Strap
- Reinforced Zippers and Stitching
- Foam Base
- 2-Color Embroidered Logos
- Dimensions: W:13" x D:9" x H:14"
- 90-Day Limited Warranty

COLOR // SKU

- A. Silver/Black // 195
- B. Lime/Grey // 196
- C. Black/Amythest // 190
- D. Dye Sub* // 193
- E. Red // 164
- F. Blue // 162
- G. Pink // 168
- H. Black // 161



1-BALL SPARE KIT™

- 600 Denier Polyvinyl Fabric
- Attaches to Most Telescoping Handles on 2-Ball, 3-Ball and 4-ball Roller Bags
- Adjustable Velcro Closure Provides Better Attachment to Roller Bag Handles
- Zippered Accessory Storage Compartment
- 2-Color Embroidered Logo
- Dimensions: W:9" x D:9" x H:11"
- 1-Year Limited Warranty

COLOR // SKU
Black // 13

DELUXE BACKPACK

- 600 Denier Polyvinyl Fabric
- Reinforced Stitching
- 2 Large Pockets
- 1 Accessory Pocket with Pen Holders and Divider
- 1 Drink Holder on Side
- Oval Bolt Zipper Pulls Provide Easy Opening
- Reinforced Rubber Handle On Top
- Flying S and Storm Embroidered logos
- Adjustable Clips to Secure Contents
- Adjustable Front Clip for Comfort
- 90-Day Limited Warranty
- Dimensions: W:14" x D:9" x H:21"

COLOR // SKU

A. Black // AC1250



BACKPACK

- 600 Denier Polyvinyl Fabric
- Reinforced Stitching
- Extra Compartments Plus Interior Pockets and Organizer
- Side Mesh Water Bottle Pockets
- 2-Color Embroidered Logos
- Oval Bolt Zipper Pulls Provide Easy Opening
- Easy-Carry Handle on Top
- Adjustable Shoulder Straps
- 90-Day Limited Warranty
- Dimensions: W:13" x D:7" x H:19"

COLOR // SKU

A. Dye Sub // AC1203

B. Black/Blue/Gray // AC1202

C. Black/Silver // AC1200

ACCESSORY BAG

- 600 Denier Polyvinyl Fabric
- Easy Access to Tools and Accessories
- 2-Color Embroidered Logo

COLOR // SKU

Black // 10



APPAREL





APPAREL



SCAN HERE TO VIEW ALL
STORM APPAREL



OR AT
STORMBOWLING.COM



C4™ WRIST BRACE

- Durable Construction
- Increase Or Decrease Rev Rate With All-In-One Spring Loaded Adjustment Mechanism
- Adjustable Strap With Quick-Release Latch
- Shoot Spares Without Removing Brace By Turning the Dial Lock
- Replacement Parts Available on Stormbowling.com
- Available in Sizes SM/MD & LG/XL

RIGHT HAND SIZE // SKU
 SM/MD // ACC4RHSM
 LG/XL // ACC4RHLG

LEFT HAND SIZE // SKU
 SM/MD // ACC4LHSM
 LG/XL // ACC4LHLG

C2™ WRIST BRACE

- Durable Construction
- Increase or Decrease Rev Rate or Axis Rotation by Adjusting Two Different Tuning Screws
- Adjustable Strap With Quick-Release Latch
- Available in Sizes SM/MD & LG/XL

RIGHT HAND SIZE // SKU
 SM/MD // ACC2RHSM
 LG/XL // ACC2RHLG

LEFT HAND SIZE // SKU
 SM/MD // ACC2LHSM
 LG/XL // ACC2LHLG



C1™ WRIST BRACE

- Durable Construction
- Adjustable Wrist and Palm Straps
- Extended Finger Support Increases Revolutions and Power
- Thick Neoprene Padding for Outstanding Comfort and Durability

RIGHT HAND SIZE // SKU
 SM/MD // ACC1RHSM
 LG/XL // ACC1RHLX

LEFT HAND SIZE // SKU
 SM/MD // ACC1LHSM
 LG/XL // ACC1LHLX



POWER PLUS™ GLOVE

- Long-Lasting Construction
- Adjust Ball Roll With Three Different Sized Palm Pads & One Gripper Pad
- Tacky Fore-Finger Material
- Removable Metal Support Bar
- Available in Sizes SM - XL

SKU

Right Hand // ACPPRH

Left Hand // ACPPLH



POWER GLOVE™

- Long-Lasting Construction
- Adjust Ball Roll With Three Different Sized Palm Pads
- Tacky Fore-Finger Material
- Available in Sizes SM-XL

SKU

Right Hand // ACPGRH

Left Hand // ACPGLH





FORECAST™ & SPORTCAST™ II

- Fits Left or Right Hand
- Detachable Wrist Straps and Padding
- Silicone Coating Repels Dirt and Perspiration
- One Size Fits Most

FORECAST // SKU
AC160BLKFC

SPORTCAST II // SKU
AC167BLKSC



FORECAST



SPORTCAST II



XTRA HOOK



XTRA ROLL

XTRA-HOOK™ & XTRA-ROLL™

- Extended Index Finger Increases Axis Rotation (Xtra Hook Only)
- Ensures Proper Wrist and Hand Positioning For Added Lift
- Outstanding Comfort and Durability
- Velcro® Straps For Easy Adjustment
- Sizes: M & L

XTRA-HOOK // SKU
Hand Right // SKU: AC105BKR
Hand Left // SKU: AC105BKL

XTRA-ROLL // SKU
Hand: Right // SKU: AC100BKR
Hand: Left // SKU: AC100BKL

WRIST LINERS

- 100% Cotton
- Absorbs Moisture
- Adds Comfort
- Protects Your Skin
- Increases The Life of Your Wrist Brace

COLOR // SKU
Blue // SKU ACWLNBLUE
Red // SKU ACWLNRED
Black // SKU ACWLNBLACK
Purple // SKU ACWLNPURPLE



XTRA-GRIP™ & XTRA-GRIP PLUS

- Reinforced Backhand Support For Consistent Wrist Position (Xtra Grip Plus Only)
- Unique Gripping Material Increases Feel For Added Control
- Supreme Ventilation Keeps Hand Dry
- Elastic Wrist Wrap Increases Tendon Support
- Spandex Fabric Finger Gussets
- Sizes: SM – XL

XTRA-GRIP // SKU
 Hand Right // SKU: AC110BKR
 Hand Left // SKU: AC110BKL

XTRA-GRIP PLUS // SKU
 Hand: Right // SKU: AC120PBR
 Hand: Left // SKU: AC120PBL



XTRA-GRIP



XTRA-GRIP PLUS



FOREARM SUPPORT

WRIST SUPPORT

NEOPRENE SUPPORTS

- Added Support
- Large Velcro® Strap Allows Simple Tension Adjustment
- Rubber Backing Keeps Support In Place Without Over-Tightening
- Breathable
- Fits Right or Left Wrist/Forearm

WRIST SUPPORT // SKU
 Regular // SKU: AC670
 Large // SKU: AC671

FOREARM SUPPORT // SKU
 SKU: AC675



SHOE COVERS

- Protects Your Sliding Sole From Water and Debris
- Keeps Shoe Dry
- Embroidered Logo
- Contains One Shoe Cover

Men's Regular // SKU: ACMSSCR (Sizes 6-10)
 Men's Large // SKU: ACMSSCL (Sizes 10-12)
 Ladies // SKU: ACLSSC (One Size Fits Most)*

*A portion of the profits from the purchase of this item will be donated to breast cancer research.



SHOE SLIDE

- One Size Fits Most
- Creates Consistent Slide From Shoe To Shoe
- Use Anytime Additional Slide Is Needed

SKU: ACSSS



GT™ TAPE

- Can Relieve Pressure
- May Reduce Swelling and Pain
- 2% Germanium Additive Can Reduce Recovery Time
- 2% Tourmanium and 2% Annon Additives May Enhance Circulation and Regeneration of Tissues

PINK QTY // SKU
 20 Pack Pouch // ACGTP1*
 12 Pouches // ACGTP12*

RED QTY // SKU
 20 Pack Pouch // ACGTR1
 12 Pouches // ACGTR12

BLUE QTY // SKU
 20 Pack Pouch // ACGTBU1
 12 Pouches // ACGTBU12

ORANGE QTY // SKU
 20 Pack Pouch // ACGTO1
 12 Pouches // ACGTO12

WHITE QTY // SKU
 20 Pack Pouch // ACGTW1
 12 Pouches // ACGTW12

BLACK QTY // SKU
 20 Pack Pouch // ACGTB1
 12 Pouches // ACGTB12



*A portion of the profits from the purchase of this item will be donated to breast cancer research.

THUMB TAPE

- White Tape Has a Textured Surface
- Black Tape Has a Smooth Surface
- Reusable Plastic Container Holds 30 Pieces
- Pre-Cut for the Perfect Fit

WHITE SIZE // QTY // SKU
 1" // (12) 30-piece Pack // AC620
 3/4" // (12) 30-piece Pack // AC625
 1" // 500-piece Roll // AC640
 3/4" // 500-piece Roll // AC645

BLACK SIZE // QTY // SKU
 1" // (12) 30-piece Pack // AC630
 3/4" // (12) 30-piece Pack // AC635
 1" // 500-piece Roll // AC650
 3/4" // 500-piece Roll // AC655

SILVER SIZE // QTY // SKU
 1" // (12) 30-piece Pack // AC710
 3/4" // (12) 30-piece Pack // AC715
 1" // 500-piece Roll // AC720
 3/4" // 500-piece Roll // AC725



MAX PRO™ THUMB TAPE

- Sweat Resistant
- Prevents Calluses and Injuries

A. THUMB FAST QTY // SKU
40 Piece Package // AC810F
16 Pack Box // AC810FBX

B. THUMB MEDIUM QTY // SKU
40 Piece Package // AC810M
16 Pack Box // AC810MBX

C. THUMB SLOW QTY // SKU
40 Piece Package // AC810S
16 Pack Box // AC810SBX

TEAL
FAST

BLUE
MEDIUM

RED
SLOW

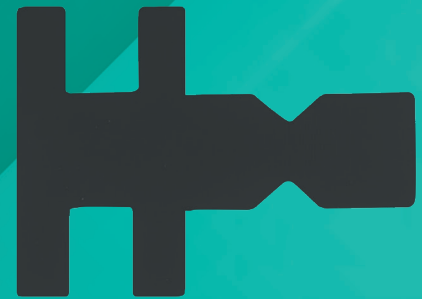


MAX PRO™ FINGER TAPE

- Ultimate protection for fingers
- Sweat Resistant
- Prevents Calluses and Injuries
- Thin Expandable Material

D. STRIP QTY // SKU
30 Piece Package // AC820
12 Pack Box // AC820BX

E. ROLL QTY // SKU
Roll // AC821
12 Pack Box // AC821BX



MAX PRO™ THUMB TAPE MEDIUM ROLL

- Ensures A Strong And Secure Fit
- Sweat Resistant
- Prevents Calluses and Injuries
- Dispensing Box Makes Getting Ready For League Night Or Your Next Tournament Even Easier

D. ROLL QTY // SKU
ONE ROLL (6.5 FT) // AC811MR





STORM PREMIER SHAMMY

- Unique Injection Molded Rubber Logo Design On One Side for Gripping
- Premium Leather Pad On Opposite Side For Wiping Ball

SKU: AC909PR



A

B

STORM NATION SHAMMY

- Ultimate Oil Removing Pad
- Restores That Tacky Feel To Ensure a Strong Backend Motion
- Works On All Types Of Bowling Balls; You Can Feel The Difference

COLOR // SKU
 A. Green // AC901GR
 B. Red // AC901RD

STORM SHAMMY

- Ultimate Oil Removing Pad
- Restores That Tacky Feel To Ensure A Strong Backend Motion
- Works On All Types Of Bowling Balls; You Can Feel The Difference

COLOR // SKU
 A. Aqua // AC901AQ
 B. Pink // AC901PK*
 C. Black // AC901BR



A

B

C

*A portion of the profits from the purchase of this item will be donated to breast cancer research.



Back

STORM DELUXE SHAMMY

- Ultimate Oil Removing Pad
- Restores That Tacky Feel To Ensure A Strong Backend Motion
- Works On All Types Of Bowling Balls; You Can Feel The Difference

SKU: AC901DLX

STORM POWER SHAMMY

- Inside Is A Powerful Magnet That Allows You To Hang It Directly On Any Metal Scoring Units
- Double-Sided Leather Pad With An Inner Layer That Helps Absorb The Oil
- Maintains The Performance Of Your Bowling Balls

SKU: AC901PB



WOVEN TOWELS

- 100% Cotton
- Woven Storm Logos
- Size: 24" x 15.5"

COLOR // SKU

A. Black/Gray // ACTWLGREY

B. Pink/Pink // ACTWLPINK

C. Navy/Silver // ACTWLNVS



MICROFIBER TOWEL

- Cuts Through Dust, Dirt and Grime Without Scratching
- Absorbs Seven Times its Weight in Moisture
- Can Be Used On Any Surface

SKU: ACTWMFTL



CLOUD GRIP SACK

- Special Combination of Conditioners and Rosin
- Absorbs Moisture and Enhances Grip
- Low Residue
- Fragrance Free

COLOR // SKU

Black/Teal // AC991



SCENTED GRIP BAGS

- Special Combination of Conditioners and Rosin
- Absorbs Moisture
- Low Residue
- Enhances Grip

FRAGRANCE // COLOR // SKU

- A. Cherry // Red // AC985
- B. Blueberry // Blue // AC995
- C. Vanilla // Black // AC990



A



B



C



DELUXE SEE-SAW TOWEL

- Premium stretch fabric
- Perfect For Carrying That One Extra Loose Ball
- Quickly Spins and Cleans The Surface Of Any Bowling Ball

SKU: ACTWVLSSBT

STORMOJI GRIP BAGS

- Special Combination of Conditioners and Rosin
- Lemon Blossom Fragrance

COLOR // SKU

- D. Angry // AC987
- E. Happy // AC988
- F. Funny // AC989



D



E



F



SEE-SAW TOWEL

- 100% Cotton
- Screened Storm Logos

COLOR // SKU

White // ACTWCTSS

Black/White //ACTWVLSSBW

PUFFY PATCHES

COLOR // SKU

- A. BLACK/WHITE/RED // ACSPP01
- B. RED/WHITE/PINK // ACSPP02
- C. TEAL/WHITE/YELLOW // ACSPP03
- D. BLUE/WHITE/ORANGE // ACSPP04
- E. BLACK/GOLD/SILVER // ACSPP05
- F. BLACK/SILVER/WHITE // ACSPP06

A



B



C



D



E



F



STORM LOGO CHARM

COLOR // SKU

- G. TEAL // AC803T
- H. ELECTRIC BLUE // AC803EB

G



H



STORM GLASS PIN PINT

QTY // SKU

- 2-PACK // AC831





REACTA CLEAN™

- One-Step Cleaner and Rejuvenator
- Specifically Designed For Reactive Balls
- Restores That “Tacky” Feeling

LIQUID MEASURE // SKU

8 oz. Bottle // CHRC8
 6 Pack 8 oz. Bottles // CHRC6P
 Quart // CHRCQ
 Gallon // CHRCG



REACTA SHINE™

- One-Step Cleaner and Polish
- Restores That “Tacky” Feeling
- Can Be Used With a Ball Spinner
- Provides Outstanding Length and Backend Reaction

LIQUID MEASURE // SKU

8 oz. Bottle // CHRS8
 6 Pack 8 oz. Bottles // CHRS6P
 Quart // CHRSQ



XTRA SHINE™

- All-Purpose Ball Polish
- Produces A Smooth and Lustrous Surface
- Extends The Life of Ball Surface

LIQUID MEASURE // SKU

8 oz. Bottle // CHXS8
 6 Pack 8 oz. Bottles // CHXS6P
 Quart // CHXSQ



XTRA CLEAN™

- All-Purpose Ball Cleaner
- Non-Flammable/Non-Combustible

LIQUID MEASURE // SKU

8 oz. Bottle // CHXC8
 6 Pack 8 oz. Bottles // CHXC6P
 Quart // CHXCQ
 Gallon // CHXCG



SURFACE MANAGEMENT KIT™

INCLUDES

- 1 - 8 oz. Bottle Xtra Clean
- 1 - 8 oz. Bottle Xtra Shine
- 1 - 8 oz. Bottle Reacta Clean
- 1 - 8 oz. Bottle Reacta Gloss
- 2 - Sponge Applicators
- 3 - Surface Adjustment Pads
- 1 - Microfiber Towel

SKU: CHSMK



SURFACE MANAGEMENT PROFESSIONAL KIT™

INCLUDES

- 1 - 8 oz. Bottle Xtra Clean
- 1 - 8 oz. Bottle Xtra Shine
- 1 - 8 oz. Bottle Reacta Clean
- 1 - 8 oz. Bottle Reacta Gloss
- 2 - Sponge Applicators
- 3 - Abralon® Surface Pads (1 Each: 500, 1000 & 2000)
- 1 - Black Shammy

SKU: CHSMKP



XTRA VALUE KIT

INCLUDES

- 1 - Quart Rough Edge™
- 1 - Quart Smooth Edge™
- 1 - Quart Reacta Gloss™
- 1 - Quart Xtra Clean™
- 1 - Quart Xtra Shine™
- 6-Pack 8oz. Xtra Clean™
- 6-Pack 8oz. Reacta Gloss™

SKU: CHVKIT





TRUE BLUE™ CLEANER

- Composed of All-Natural Polyphenolics Extracted From Root Vegetables
- Contains No Toxic Petrochemicals or Harsh Benzene Derivatives
- Will Not Irritate The Skin or Eyes

LIQUID MEASURE // SKU
 8 oz. Bottle // CHTBB
 Quart // CHTBQ
 6 Pack 8 oz. Bottles // CHTB6P



U-CLEAN U-SCORE™ URETHANE BALL CLEANER

- The Original Product That Started Storm Products Inc., But Better!
- Newly-Engineered To Clean 21st Century Lane Conditioners and Modern Urethane Bowling Balls

LIQUID MEASURE // SKU
 8 oz. Bottle // CHUCUSB
 Quart // CHUCUSQ
 6 Pack 8 oz. Bottles // CHUCUS6P



REACTA GLOSS™

LIQUID MEASURE // SKU
 8 oz. Bottle // CHRGB
 Quart // CHRGO
 6 Pack 8 oz. Bottles // CHR6P



ROUGH EDGE™

LIQUID MEASURE // SKU
 Quart // CHREQ

SMOOTH EDGE™

LIQUID MEASURE // SKU
 Quart // CHSEQ





REACTA SKUFF™

- Works Well Either By Hand Or Ball Spinner
- Cleans and Sands the Surface At The Same Time

(QTY) LIQUID MEASURE // SKU

8 oz. Bottle // CHRSKB

6 Pack 8 oz. Bottles // CHRSK6P

Quart // CHRSKQ

REACTA FOAM™

- Innovative Foam Dispenser Allows You To Apply Directly To The Surface Of The Bowling Ball
- Uses Less Product Which Saves You Money
- Specifically Designed For Reactive Balls
- One-Step Ball Cleaner and Rejuvenator Which Restores That “Tacky” Feeling

(QTY) LIQUID MEASURE // SKU

8 oz. Bottle // CHRFB

6 Pack 8 oz. Bottles // CHRFB6P



REACTA WIPES™

- Rejuvenates Coverstock
- Maximizes Performance
- Increases Tackiness
- Re-Sealable Pouch

QTY // SKU

20 wipes (1 pouch) // CHRWP

12 Pouches // CHRWD



2-2-1 THUNDER PLUG™

- Plugs Most Hole Sizes In One Pour
- 6 – 8 Hour Full Cure With No Color Change In Pigment
- Calibrated Pumps Provide Consistent 2:1 Ratio Every Time
- Pigments Provide Rich, Vibrant Color With Less Product

PUMP KIT

Quantity: 2 Pumps // SKU: BPPUMPK

HARDENER

Volume: Half Gallon // SKU: BPHARDENER

COMPOUND

Volume: Half Gallon // SKU: BPCOMPOUND

PIGMENT KIT COLOR // SKU

Kit // BPCOLORK

Gold Powder // BPGOLD

Silver Powder // BPSILVER

White // BPWHITE

Yellow // BPYELLOW

Orange // BPORANGE

Red // BPRED

Purple // BPPURPLE

Blue // BPBLUE

Green // BPGREEN

Black // BPBLACK

THUNDER PLUG™ STARTER KIT

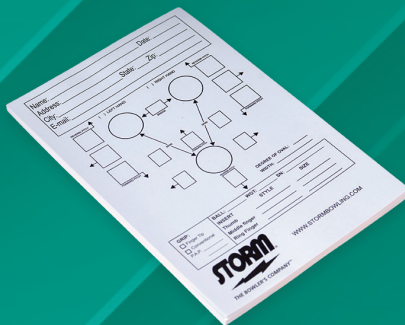
- (1) Half Gallon Hardener
- (2) Half Gallons Compound
- (1) Thunder Plug™ Pump Kit
- (1) Black Pigment

SKU: BPSTARTERK

REFILL KIT

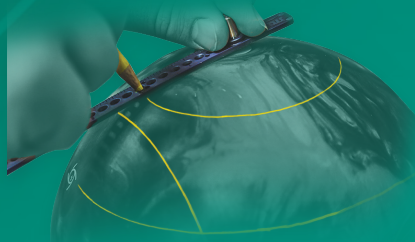
- (1) Half Gallon Hardener
- (2) Half Gallons Compound
- (1) Black Pigment

SKU: BPREFILLK



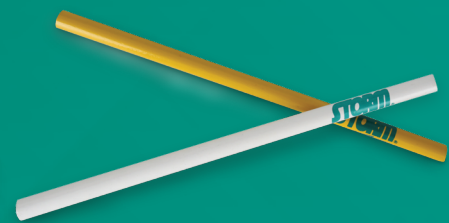
DRILL SPEC PAD

Contains 50 Sheets Per Pad
SKU: DRILLSPEC



ARC RULER

SKU: ACARC



PRO SHOP PENCIL

White // SKU: ACPENCILSTOWH
Yellow // SKU: ACPENCILSTO

6" ABRALON® PADS

- (QTY) GRIT // SKU
 (1) 180-grit // GRIPDISC180
 (1) 360-grit // GRIPDISC360
 (1) 500-grit // GRIPDISC500
 (1) 1000-grit // GRIPDISC1000
 (1) 2000-grit // GRIPDISC2000
 (1) 3000-grit // GRIPDISC3000
 (1) 4000-grit // GRIPDISC4000
 (20 Pack) 180-grit // GRIPDISC180 20PK
 (20 Pack) 360-grit // GRIPDISC360 20PK
 (20 Pack) 500-grit // GRIPDISC500 20PK
 (20 Pack) 1000-grit // GRIPDISC1000 20PK
 (20 Pack) 2000-grit // GRIPDISC2000 20PK
 (20 Pack) 3000-grit // GRIPDISC3000 20PK
 (20 Pack) 4000-grit // GRIPDISC4000 20PK



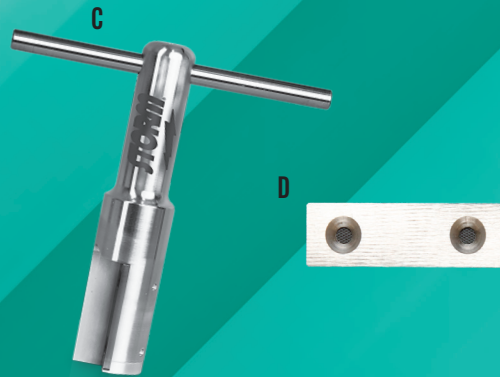
DELUXE BALL CUP

- A. Black Ball Cup // SKU: ACDLXBCSTBK
 B. Blue Ball Cup // SKU: ACDLXBCSTBL

SUR-FRESH™

- Scientific Formulation Balances Bacteria Levels In Water To Reduce Odor
- Reduced Buildup Of Materials On Cutting Medium
- Increased Cut Life and Cutting Capabilities Of Sanding Medium
- Protection Against Corrosion and Rust
- Less Time Spent Changing Water
- New and Improved Formula

- (QTY) LIQUID MEASURE // SKU
 (1) 8 oz. Bottle // CHSF8
 (1) Gallon // CHSFG
 (6) 8 oz. Bottles // CHSF6P (not shown)



STORM REAMER

- Designed To Ream Out 1³/₈" Interchangeable Outer Sleeve
- Allows For Smooth Insertion And Removal Of The Interchangeable Thumb Insert

- STYLE // SKU
 C. REAMER // AC801
 D. REPLACEMENT BLADE // AC801B

SLOT WALL BALL DISPLAY

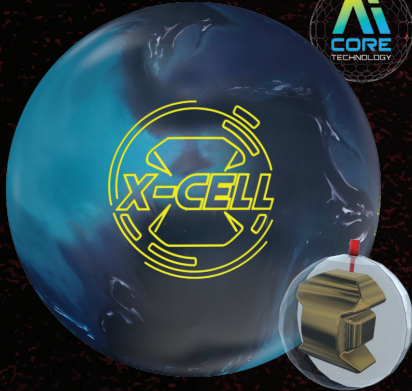
- Fits Both Standard and Reinforced Slat Wall
- Slot Wall Accepts Standard Storm Shelf Talkers 3" x 8"
- Storm Stickers Included With Slot Wall Holder

Slot Wall // SKU: ACSLOTBALL





2024 BOWLING BALL CATALOG



X-CELL™

COLOR: Turquoise/Navy/Black

CORE: Nucleus™ Energized by
A.I. Core Technology

COVER: eTrax™ ULTRA Solid Reactive

BOX FINISH: 2000-Grit Abralon®

BUILT FOR: Medium/Heavy - Heavy Oil

FLARE POTENTIAL: High

AVAILABLE WEIGHTS: 16 - 12 Lbs.

SKU: RXD

	RG	DIFF	PSA
16LB	2.50	.050	.018
15LB	2.50	.056	.019
14LB	2.55	.048	.016
13LB	2.56	.034	.011
12LB	2.58	.031	.009



ATTENTION™ STAR

COLOR: Berry/Silver/Iron

CORE: Momentous™ AV Energized by
A.I. Core Technology

COVER: eTrax™ PLUS Pearl Reactive

BOX FINISH: Reacta Gloss™

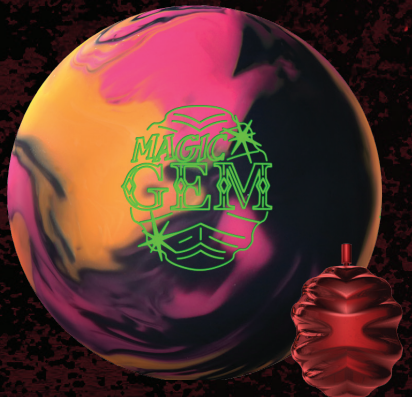
BUILT FOR: Medium Oil

FLARE POTENTIAL: High

AVAILABLE WEIGHTS: 16 - 12 Lbs.

SKU: RZS

	RG	DIFF	PSA
16LB	2.48	.052	.017
15LB	2.48	.049	.017
14LB	2.53	.046	.014
13LB	2.56	.034	.011
12LB	2.58	.031	.009



MAGIC GEM™

COLOR: Citrine/Rhodonite/Jet

CORE: Defiant™ LRG Core

COVER: MicroTrax™ Hybrid Reactive

BOX FINISH: 2000-Grit Abralon®

BUILT FOR: Medium/Heavy - Heavy Oil

FLARE POTENTIAL: High

AVAILABLE WEIGHTS: 16 - 12 Lbs.

SKU: RIG

	RG	DIFF	PSA
16LB	2.47	.051	.016
15LB	2.47	.053	.016
14LB	2.50	.052	.015
13LB	2.57	.032	.010
12LB	2.59	.029	.008



VISIT OUR WEBSITE TO LEARN
MORE ABOUT EACH OF THESE
AWESOME ROTO GRIP BALLS!



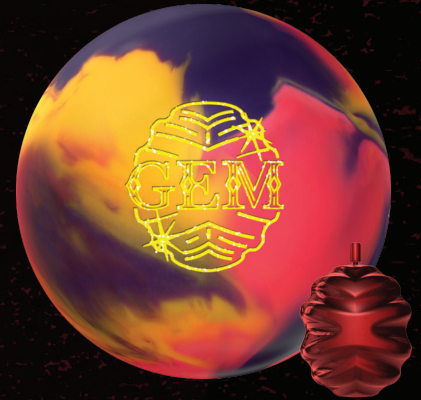
HP **4** HIGH PERFORMANCE

GEM™

COLOR: Citrine/Ruby/Amethyst
CORE: Defiant™ LRG Core
COVER: MicroTrax™ Solid Reactive
BOX FINISH: 2000-Grit Sanded
BUILT FOR: Medium/Heavy - Heavy Oil
FLARE POTENTIAL: High
AVAILABLE WEIGHTS: 16 – 12 Lbs.
SKU: RGM

	RG	DIFF	PSA
16LB	2.47	.051	.016
15LB	2.47	.053	.016
14LB	2.50	.052	.015
13LB	2.57	.032	.010
12LB	2.59	.029	.008

ROTO GRIP



HP **3** HIGH PERFORMANCE

OPTIMUM IDOL™

COLOR: Heliotrope Purple
CORE: Ikon™ Energized by A.I. Core Technology
COVER: MicroTrax™ Solid Reactive
BOX FINISH: 2000-Grit Abralon®
BUILT FOR: Medium - Medium/Heavy Oil
FLARE POTENTIAL: High
AVAILABLE WEIGHTS: 16 – 12 Lbs.
SKU: RIX

	RG	DIFF
16LB	2.47	.054
15LB	2.47	.056
14LB	2.51	.054
13LB	2.58	.047
12LB	2.64	.037





2024 BOWLING BALL CATALOG



HUSTLE™ X-RAY

COLOR: Slate/Black
COVER: VTC™ Solid Reactive
BOX FINISH: 4000-Grit Abralon®
SKU: RQX

HUSTLE™ B/R/Y

COLOR: Burgundy/Red/Yale Blue
COVER: VTC™ Hybrid Reactive
BOX FINISH: Reacta Gloss®
SKU: RYQ

HUSTLE™ RIP

COLOR: Royal Imperial Purple
COVER: VTC™ Solid Reactive
BOX FINISH: Reacta Gloss®
SKU: RQR

HUSTLE™ M+M

COLOR: Magenta/Midnight
COVER: VTC™ Pearl Reactive
BOX FINISH: Reacta Gloss®
SKU: RQA

	RG	DIFF
16LB	2.53	.030
15LB	2.53	.030
14LB	2.55	.030
13LB	2.63	.009
12LB	2.65	.011
11LB	2.73	.012
10LB	2.77	.015

CORE: Hustle™ Core
BUILT FOR: Light - Light/Medium Oil
FLARE POTENTIAL: Medium
AVAILABLE WEIGHTS: 16 - 10 Lbs.



VISIT OUR WEBSITE TO LEARN
MORE ABOUT EACH OF THESE
AWESOME ROTO GRIP BALLS!





RETRO RG™ SPARE BALL

COLOR: Charcoal
CORE: 3-Piece Core
COVER: High-Impact™ Pearl Urethane
BOX FINISH: 3500-Grit Polished
BUILT FOR: Light Oil - (Spare)
FLARE POTENTIAL: Low
AVAILABLE WEIGHTS: 16 – 14 Lbs.
SKU: RRG

	RG	DIFF
16LB	2.69	.006
15LB	2.69	.006
14LB	2.68	.006



ACCESSORIES



SQUAD RG SHAMMY
 SKU #:
 ACRG909SQ



RG SHAMMY PURPLE
 SKU#:
 ACRG901PU



RG SHAMMY RED
 SKU #:
 ACRG901RD



RG STAR GRIP SACK
 SKU #:
 ACSACKSTAR



DELUXE RG BALL CUP
 SKU #: ACDLXBCRGRD



ROTO GRIP MEGA MICROFIBER SEE-SAW
 SKU#: ACTWMFR



SCAN ME



ROTO GRIP WOVEN TOWEL BLACK/RED
 SKU #: ACTWLRG





2024 BOWLING BAG CATALOG



3-BALL ALL-STAR EDITION ROLLER

BLACKOUT SKU #: R3307
COMPETITOR SKU #: R3305

Bold, yet stylish, this showstopper of a bag was built to last. Fully equipped with all the pockets and features you could need or want in a premium bowling bag. This stylish 3-ball bag has a place for every bowling essential. Trusted by bowling enthusiasts of all skill levels, this top-of-the-line bag is ideal for those who demand the most out of their bowling gear.

5-YEAR LIMITED WARRANTY | REPLACEABLE PARTS: Retractable Handle System, Axle, Clear-Gum™ Wheels & Wheel Bearings



3-BALL ALL-STAR EDITION TRAVEL TOTE

COMPETITOR SKU #: R3007
BLACKOUT SKU #: R3005

Compact, lightweight, and durable, this sleek and snazzy 3-ball tote makes traveling with multiple bowling bags a piece of cake. Generated with easy mobility and transportation in mind, this simplistic design is not only easy to maneuver around a bowling center, its also easy to load in and out of your vehicle. Let's just say this 3-ball tote has everything you need and nothing you don't.

90-DAY LIMITED WARRANTY

VISIT ROTOGRIP.COM





2-BALL ALL-STAR EDITION ROLLER

BLACKOUT SKU #: R2305
COMPETITOR SKU #: R2307

Our top-level 2-ball premium roller bag has all the style, space, and organization you could want from a bag this size. Commonly referred to as the "mini" version of our 3-ball premium roller, this bag is ideal for the avid bowler who demands top-level functionality and design while only needing to move 2 balls at a time.

5-YEAR LIMITED WARRANTY | REPLACEABLE PARTS: Retractable Handle System, Axle, Clear-Gum™ Wheels & Wheel Bearings



2-BALL ALL-STAR EDITION DUFFLE

SKU #: R2205

One bag, dual functionalities. Yes, you read that correctly. This bag was designed and developed from the 2-ball carry bags from yesteryear to serve as a multi-purpose bag in the bowling world. On the bowling side of things – this bag was created to carry two balls and all your other necessities like your shoes and accessories. So, if you are one who uses triple totes and needs a bag to carry everything else along with a couple of extra balls, this is for you. Or if you are in a climate where wheeled bags just aren't practical, one or two of these bags will do the trick and allow you to carry all your bowling gear with ease and no cramming or stuffing. And if you are needing a bag for daily use or maybe for a weekend getaway, this bag quickly converts to a basic duffel bag by simply removing all the components in the main compartment. Yes, you read that correctly, the foam ball holder, the ball divider, and the shoe shelf all can easily be removed in order to make it one big storage space in the main compartment.

90-DAY LIMITED WARRANTY

2-BALL ALL-STAR EDITION CARRYALL TOTE

SKU #: R2207

Constructed for those who don't mind carrying their gear over a shoulder to and from the lanes. This 2-ball carryall tote delivers both durability and spaciousness. Balls, shoes, accessories, personal items, there's room for it all. And the fixed adjustable non-slip padded shoulder strap and grab handles make it easy to pick up and put down.

90-DAY LIMITED WARRANTY



SCAN ME

VISIT OUR WEBSITE TO LEARN MORE ABOUT EACH OF THESE STUNNING ROTO GRIP BAGS!

VISIT ROTOG RIP.COM





2024 BOWLING BAG CATALOG



ROTO TOPLINER BACKPACK

COMPETITOR SKU #: RG1207

The Roto-Grip Topliner Backpack was created for those who like to keep their bowling stuff organized and easily accessible. The full zip main compartment opens wide and flat to easily access all the interior zippered pockets. And the adjustable divider inside at the bottom of the main compartment can be used to create a separate space or can be adjusted to fold out of the way. This backpack measures in larger than the All-Star Edition Backpack, but smaller than the MVP+ Backpack. Because let's face it, not all backpacks are created equal.

90-DAY LIMITED WARRANTY



ROTO MVP+ BACKPACK

BLACKOUT SKU #: RG1205

The Roto Grip MVP+ Backpack is LARGE and IN CHARGE! It was created for those bowlers who travel a lot and need extra amounts of space to store and organize all their stuff. This backpack will not only secure all your bowling gear, but it will easily store your laptop, accessory bag, a change or two of clothing, and even an extra pair of shoes if need be. Because let's face it, not all backpacks are created equal in size and function. Bottom line, this one is ideal for those who prefer to use travel tote bags with no pockets to carry their equipment, and need all the extra space they can get on their back.

90-DAY LIMITED WARRANTY

VISIT ROTOGRIP.COM





RG CADDY

BLACKOUT SKU #: RG1105

COMPETITOR SKU #: RG1107

Need a home for your spare ball?
Got an extra ball in your bowling arsenal and not enough spots in your bags?
Do you just need some extra space for some extra stuff?
Have no fear, the RG Caddy is here, and it has you covered.
This zesty little add-on bag easily straps to any telescoping handle no matter the brand of bag.

90-DAY LIMITED WARRANTY



MVP+ ACCESSORY CASE

BLACKOUT SKU #: RG1011

COMPETITOR SKU #: RG1007

The Roto Grip MVP+ Accessory Case was built to meet the storage needs of the serious bowler. It's oversized design features multiple zippered pockets and multiple mesh pockets for the storage and security of tape, skin patch, and other accessories you use. Not to mention it also includes a foam insert in the back pocket to securely hold interchangeable thumbs and tools as well. And in case you were wondering, it was designed to fit perfectly in the main compartment of the MVP+ Backpack as well, it's ok, you can thank us later.

90-DAY LIMITED WARRANTY



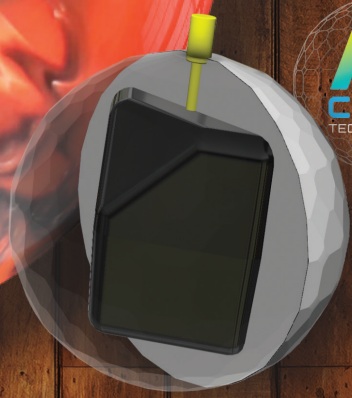
VISIT OUR WEBSITE TO LEARN
MORE ABOUT EACH OF THESE
STUNNING ROTO GRIP BAGS!

VISIT ROTOGRIP.COM



900 GLOBAL™

Reserve
BATCH №
902
Blend



Harsh Reality™ Pearl

COVER: RESERVE BLEND 902™ PEARL REACTIVE

CORE: DISTURBANCE™ A.I. ASYMMETRIC

FINISH: REACTA GLOSS™

COLOR: ORANGE/SILVER/BLACK

SKU: GRL

PURPOSELY ENGINEERED FOR

Med-Heavy Oil

LB	RG	DIFF	PSA
16	2.47	.054	.019
15	2.48	.054	.019
14	2.49	.054	.019
13	2.56	.034	.011
12	2.58	.031	.009

900global.com



Reserve
BATCH N°
902
Blend



Harsh Reality™

COVER: RESERVE BLEND 902™ SOLID REACTIVE

CORE: DISTURBANCE™ A.I. ASYMMETRIC

FINISH: 2000-GRIT ABRALON®

COLOR: ATOMIC/GRAPHITE/BLACK

SKU: GRY

PURPOSELY ENGINEERED FOR

Heavy Oil

LB	RG	DIFF	PSA
16	2.47	.054	.019
15	2.48	.054	.019
14	2.49	.054	.019
13	2.56	.034	.011
12	2.58	.031	.009

900global.com



900 GLOBAL™

Reserve
BATCH №
901
Blend



Eternity™ Pi

COVER: RESERVE BLEND 901™ SOLID REACTIVE
CORE: EPOCH™ ASYMMETRIC
FINISH: 2000-GRIT ABRALON®
COLOR: BURGUNDY/WHITE/BLACK
SKU: GEB

PURPOSELY ENGINEERED FOR
Heavy Oil

LB	RG	DIFF	PSA
16	2.47	.052	.014
15	2.49	.050	.014
14	2.51	.044	.011
13	2.57	.032	.010
12	2.59	.029	.008

900global.com





Reserve
BATCH №
802
Blend



Sublime™

COVER: RESERVE BLEND 802™HYBRID REACTIVE

CORE: IMMERSED™ A.I. SYMMETRIC

FINISH: REACTA GLOSS™

COLOR: NEON PURPLE/AMBER/BLACK

SKU: GSM

PURPOSELY ENGINEERED FOR

Med-Heavy Oil

LB	RG	DIFF
16	2.47	.051
15	2.47	.056
14	2.49	.050
13	2.59	.045
12	2.65	.035

900global.com



900 GLOBAL™

Reserve
BATCH №
702
Blend



X PONENT™ Pearl

COVER: RESERVE BLEND 702™ PEARL REACTIVE

CORE: SHRAPNEL 2.0™ SYMMETRIC

FINISH: REACTA GLOSS™

COLOR: SKY BLUE/BLACK

SKU: GXL

PURPOSELY ENGINEERED FOR

Medium Oil

LB	RG	DIFF
16	2.48	.041
15	2.48	.042
14	2.49	.042
13	2.59	.045
12	2.65	.035

900global.com





900 Global Premier Zen Shammy

SKU# GT0504

Features a circular design that promotes ease of use as well as efficiency. Perfectly sized to fit easily into your hand. It will restore that tacky feel to ensure a strong backend motion.



900 Global Shammy

SKU# GT0502

Designed with one purpose in mind...removal of oil. Wipe your ball down with the shammy prior to every shot and you will see increased performance.



900 Global Grip Sack

SKU# AC992

Keeps your hands dry and in control. Provides a better grip for a more effective release.



900 Global Deluxe Ball Cup

SKU# ACDLXBCGLBK

Engineered with a neoprene ring around the top to reduce the movement of your ball once it is placed. Proudly display your favorite bowling balls on the lanes between shots, at home, or wherever you may choose.



900 Global See-Saw

SKU# GA1100

The 900 Global See-Saw features an oversized construction which will provide a large cleaning surface. This stylish see-saw will protect your bowling ball during storage in a bag or locker. This durable material is also 100% machine washable.

900 GLOBAL™

3-Ball Deluxe Roller

SKU# GB3900 | GOLD/BLUE

- 600 Denier Nylon Construction
- 4 Quad 5" Wheels For Added Stability
- Shoe Compartment Holds Up To Size 15
- Locking Handle
- 3 Accessory Pockets
- 5-Year Limited Warranty



Double-Wheel Technology for Increased Stability

2-Ball Deluxe Roller

SKU# GB2900 | GOLD/BLUE

- 600 Denier Nylon Construction
- 4 Quad 5" Wheels For Added Stability
- Shoe Compartment Holds Up To Size 15
- Locking Handle
- 2 Accessory Pockets
- 5-Year Limited Warranty

Double-Wheel Technology for Increased Stability

3-Ball Deluxe Airline Roller

SKU# GB3700 | GOLD/BLUE

- 600 Denier Nylon Construction
- Removable Shoe Pouch
- Shoe Compartment
Holds Up To Size 15
- Transparent Top With
Dual Zipper
- 4-Clips Secure Shoe Pouch
- 90-Day Limited Warranty



2-Ball Travel Tote

SKU# GB2800 | GOLD/BLUE

- 600 Denier Nylon Construction
- Transparent Top With Dual Zipper
- Padded Shoulder Strap
- Holds Up To Size 12 Shoe
- Padded Ball Compartment
- 1-Year Limited Warranty

900 Global Backpack Camo

SKU# GB1200 | BLUE CAMO

- 600 Denier Polyvinyl Fabric
- Easy Carry Top Handle
- Large Interior Space For Your Bowling Shoes
And All Your Accessories
- Stretchy Side Pocket Conveniently Secures
Your Water Bottle
- Exterior Bungee Cord Readily Secures Loose
Items So You Can Quickly And Easily Move
From Pair To Pair
- Embroidered 900 Global And Large "G" Logos
- 90-Day Limited Warranty



900global.com

RACER

- High-quality design through extensive research and testing
- Optimized fit with a sleek, three-dimensional embossed design
- Incorporated front nose mesh hole and side vents help with air circulation through excellent breathability



Black

RH Sizes: 7-12, 13, 14
SKU: S3028

White

RH Sizes: 4-12, 13, 14
SKU: S3025

RH Wide Sizes: 7-12, 13, 14
SKU: S3026

LH Sizes: 6-12, 13, 14
SKU: S3027

INCLUDED ACCESSORY KIT



Shoe Carry Bag



Shoe Cover



Traction Sole Fixed
Other Parts Replaceable



Extra Sole and Heel



TOUR LINE

TOUR ULTRA/C

Mint Women's

RH Sizes: 5-11 SKU: S3024

Classic Tuxedo upper pattern in a true, full grain leather with a modern striking flare on the heel.



INCLUDED ACCESSORY KIT

Removable slide sole and heel that fits all of the 3G spare parts.

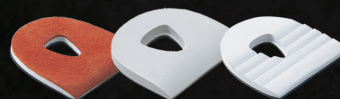


Shoe Carry Bag



4 Interchangeable Soles

Cleated Sole, Chrome Sole, Deer Skin Sole, Back Skin Sole



3 Interchangeable Heels

Back Skin Leather, Flat, and Rippled Heel



Shoe Cover (1), Shoe Trees, and Cleat Pick

TOUR BLACK

Black

RH Sizes: 4-12, 13, 14 SKU: S3020
RH Wide Sizes: 7-12, 13, 14 SKU: S3021
LH Sizes: 6-12, 13, 14 SKU: S3022

Working with tanneries all over the world we have sourced our new sustainable comfort leather and wrapped it around our signature 3G pattern. This new colorway from 3G combines our signature look with a 100% leather upper for quality and value you will appreciate.



SPEED DIAL+

Black/Red

RH Sizes: 7-12, 13, 14 SKU: SS102

- ATOP system allows you to dial in the tightness in micro steps with one hand operation, pull out guide makes it easy to step in and out
- Holt melt diamond plated mesh upper
- Interchangeable slide sole on slide foot only



BELMO MVR-1

Black/White

RH Sizes: 7-12, 13, 14 SKU: SS103

- Rise Plus Outsole - Interchangeable slide sole
- X-Ray Mesh Upper
- Comfort Top Opening
- Molded Rubber Heel Pull



ASCENT

Black

RH Sizes: 7-12, 13, 14 SKU: SS100

Blue

RH Sizes: 7-12, 13, 14 SKU: SS101

- Featuring our Rise outsole. This lightweight outsole won't sacrifice durability as it's a blown out rubber outsole
- Authentic Clarino Microfiber slidesole matched with our 3G grooved heel on the slide foot
- Fixed durable rubber with 3G grooved heel on the traction foot for maximum leverage
- Fly knit upper with 3d molded ribbing for extreme comfort with a molded heel stabilizer





KICKS LINE

KICKS II



Kicks II Universal Slide Soles

Navy

Unisex Sizes: 4.5-12, 13, 14
SKU: SK1800

Gray

Unisex Sizes: 4.5-12, 13, 14
SKU: SK1900

Black/Blue

Unisex Sizes: 4.5-12, 13, 14
SKU: SK1600

Black

Unisex Sizes: 4.5-12, 13, 14
SKU: SK1500

Lavender

Women's Sizes: 6-10, 11
SKU: SK1400

Coral

Women's Sizes: 6-10, 11
SKU: SK1700

KICKS LINE



KICKS



Black/Pink

Women's

Sizes: 6-10, 11

SKU: SK700



Kicks Universal Slide Soles

Black/Black

Youth Unisex

Sizes: 2, 3, 4

Unisex

Sizes: 4.5-12, 13, 14, 15

SKU: SK200

AVAILABLE IN WIDE

Wide Unisex

Sizes: 5-12, 13, 14, 15

SKU: SK200W

ACCESSORIES

3G PARTS CASE

SKU: 3GB11

- Protects and organizes your 3G soles and heels
- Allows you to easily catalog and carry 6 soles and 4 heels or 4 soles and 8 heels
- Embossed 3G logo
- Dual Zippers
- Dimensions: 6.5" x 9.5" x 2"





SHOE SLIDER

SKU: SP-SL

- One size fits most
- Creates consistent slide from shoe to shoe
- Use anytime additional slide is needed



SHOE BRUSH

SKU: SP-BR

- Comfortable handle
- Firm bristles help clean even the dirtiest soles and heels



3G PATCH

SKU: AC3GP01

SHOE FRESHENERS

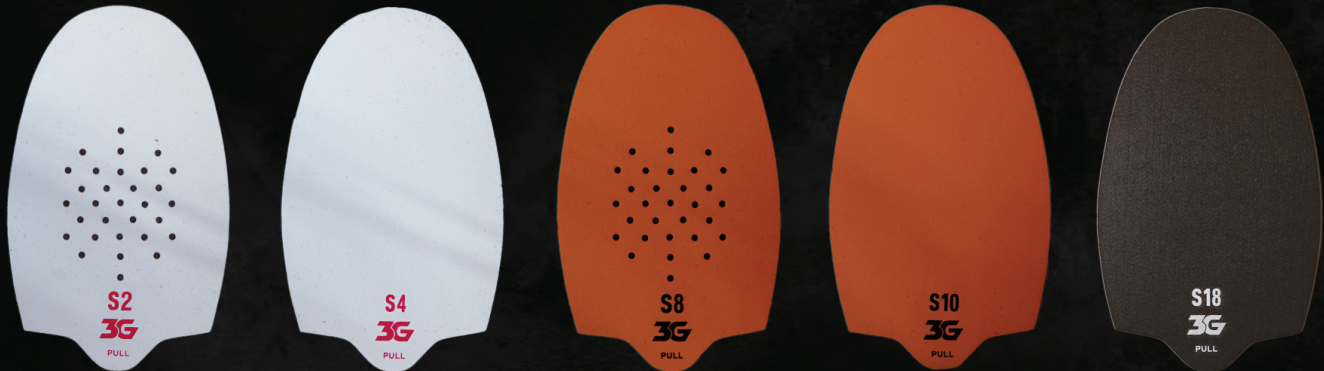
SKU: SP-SF

- Designed with odor-neutralizing technology
- Compact size for convenience



FORMULA SLIDES

Replacement Soles fit up to size 15 and will need to be trimmed to fit.



High Friction
SP-S2

Med-High Friction
SP-S4

Medium Friction
SP-S8

Low-Med Friction
SP-S10

Low Friction
SP-S18

Less Slide

Most Slide

FORMULA HEELS

Replacement Heels come in both Regular (up to size 9.5) and Large (Sizes 10-15) and may also need to be trimmed to size.



Extreme Friction
SP-H3-R

High Friction
SP-H5-R

Med-High Friction
SP-H7-R

Medium Friction
SP-H11-R

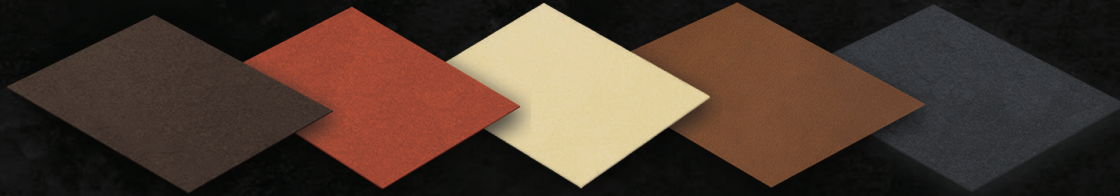
Med-Low Friction
SP-H15-R

Low Friction
SP-H17-R

Less Slide

Most Slide

CUT TO FIT SOLE SOLIDS



Oiled Leather
SP-SS-OL

Back Skin
SP-SS-BS

Deer Skin
SP-SS-DS

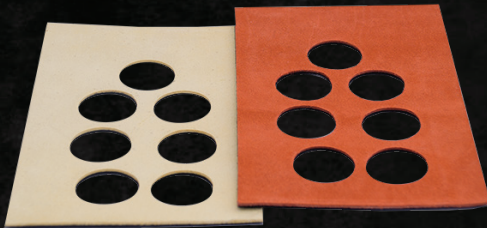
Chrome Leather
SP-SS-CL

Felt
SP-SS-FT

Most Friction ←

→ Least Friction

CLEATED SOLE



Deer Skin
Back Skin

Size M (6-8)

Size L (8.5-11)

Size LL (11.5-13)

SP-CS-DSM

SP-CS-DSL

SP-CS-DSLl

SP-CS-BSM

SP-CS-BSL

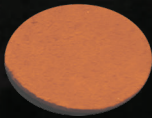
SP-CS-BSLl

CLEATS

Most Friction



Oil Leather
SP-CLT-OL



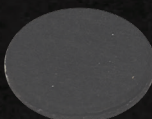
Back Skin
SP-CLT-BS



Deer Skin
SP-CLT-DS



Chrome Leather
SP-CLT-CL



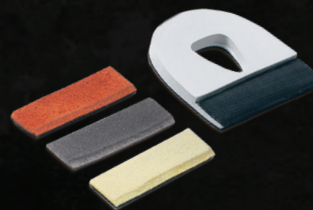
Felt
SP-CLT-FT



Teflon
SP-CLT-TF

Least Friction

ADJUST-A-HEEL



Universal
SP-AH-M
SP-AH-LL
SP-AH-LLL

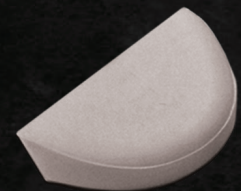
(RH or LH)
(6-8)
(8.5-11)
(11.5-13)

Right Hand
SP-GTC-M
SP-GTC-LL
SP-GTC-LLL

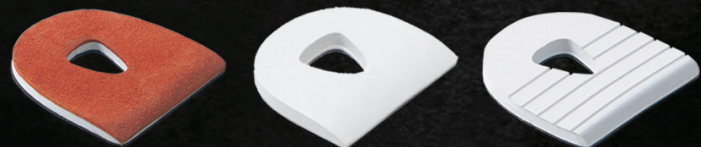
Left Hand
SP-GC-M
SP-GC-LL
SP-GC-LLL

Size
(6-8)
(8.5-11)
(11.5-13)

REPLACEABLE TOE CAP



INTERCHANGEABLE HEELS



Least Friction ←

→ Most Friction

Back Skin
Flat Normal
Rippled

Sizes 6-8
SP-LH-M
SP-FN-M
SP-RH-M

Sizes 8.5-11
SP-LH-LL
SP-FN-LL
SP-RH-LL

Sizes 11.5-13
SP-LH-LLL
SP-FN-LLL
SP-RH-LLL



The **STRIPES*** Identity
Wrist Master®
The brand with the STRIPES*



M44 | The Original Wrist Master® II

- Adjustable wrist & palm inserts
- Sizes: RH or LH in XS, S, M, L & XL
5 3/4" | Colors: Royal, Black



M45 | Ladies Wrist Master® II

- Sizes: RH or LH in XS, S & M
5 3/4" | Colors: Black, Green, Berry, Powder Blue

WRIST MASTER®

GLOVES & WRIST SUPPORTS



M58 | Deluxe Wrist Glove

- Handcrafted from supple, top quality leather
- Provides flexibility and breathability
- Sizes: RH or LH in S, M, L, XL 10 1/2" | Color: Black



M47 | Master Bowling Glove

- Long-lasting super-grip fabric for maximum contact
- Breathable elastic fabric and finger gussets
- Sizes: RH or LH in S, M, L & XL
Color: Black



UNIVERSAL SIZING CHART FOR ALL GLOVES

Measurement	Glove size
6"	X-SM
7"	SMALL
8"	MEDIUM
9"	LARGE
10"	XL
11"	2XL

Measure in inches around largest part of hand (no thumb)





M73L | Wrist Guard™ Extra Long
9 1/2"

M73 | Wrist Guard™

- Washable terry velour
- One dozen units per package
- Sizes: One size fits all
7 1/2" | **Colors: Assorted**



**Wear under any
wrist support**

GLOVES & WRIST SUPPORTS



M49 | Wristers™

A trademark of Master Industries since 1987

- Closed-cell neoprene with flexible insert
- Helps prevent carpal tunnel syndrome
- Sizes: S, M, L, XL, 2X
Colors: Blue, Red, Yellow



M55 | Wristers Wrap+™

- Stabilizes the wrist while increasing strength/ endurance more than the standard Wristers
- Made with premium materials and fine stitching
- Machine washable
Color: Blue



M70 | Pro Elbow Support

- Fully washable, super-strong webbing
- 12 units per package
- Sizes: One size fits all
Color: Black



M166 | Puff-Ball™

A trademark of Master Industries since 1987

- Made of 100% woven terry velour

Colors: One dozen assorted colors



M166L | Giant Puff-Ball™

Colors: One dozen assorted colors

M266 | Camo Puff-Ball™

M266L | Camo Giant Puff-Ball™

- Made of 100% woven terry velour

Colors: One dozen Camo/Navy



GRIP AIDS

GRIP AIDS



M137M | Master Slide™

- 24 units per display card



M135M | Master Slide™

- 48 units per display box

All units individually packed in reusable zip-lock bags



M162 | Hand Conditioner

- Soft, non-abrasive powder comes in a reusable zip-lock poly-bag
- One dozen units in display box





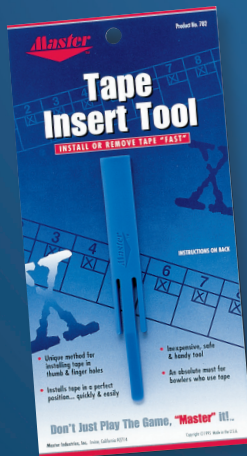
Insert Tape

- Pre-cut, ready to use pieces of tape
- Excellent adherence, easily removed. Leaves no residue
- Provides better release control



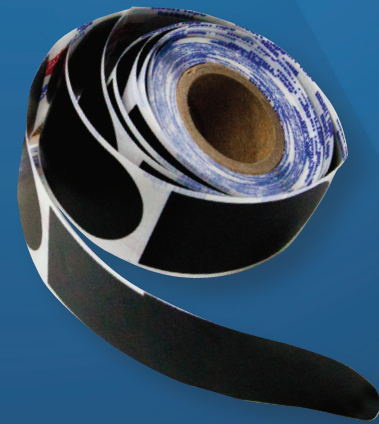
Master bowling insert tape is pre-cut & ready to use

24 Pack			32 pc	48 pc	Black Smooth	White Texture
			#M243	1/2" Insert Tape		✓
#M244	3/4" Insert Tape	✓		✓	✓	
#M245	1" Insert Tape	✓		✓	✓	



M782 | Tape Insert Tool

- Tool places tape in precise position quickly and easily for thumb and finger holes
- One dozen units per package



M247/M248 | Insert Tape Bulk

M247BB – 3/4" Black Smooth
M248BB – 1" Black Smooth

- 100 pieces per roll

GRIP AIDS



M160 | Rosin Pak

- Each bag is individually packaged in a reusable zip-lock poly-bag
- One dozen per display box



M163 | Giant Rosin Bags

- One dozen per display box



M142 | Non-Slip Grip Cream

- One dozen per display

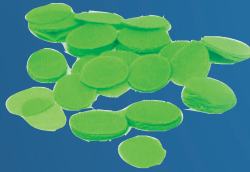




M154GS | Giant Skin Patch™

- A larger 3/4 oz. bottle
- Each reusable poly-bag contains a 3/4 oz. bottle with applicator brush, cotton and patches
- Packed 12 units per packer

100 piece
neon
patches



M154PG



M154D | Skin Patch™ Display

- Each unit box contains a 1/4 oz. bottle of Skin Patch™ with applicator brush, cotton and patches
- Individually packaged, 12 units per display box

M154 | Skin Patch™

- Kit includes 1/4 oz. bottle of Skin Patch™ with applicator brush, cotton and patches
- Individually packaged, 24 units per display box



SKIN PATCH

BALL CLEANERS



M149.BLK
Color: Black/Blue,
Black/Red

The Original Buff-a-Ball®

- Made of extra strong, heavy-duty, napped flannel
- Fully washable
- Individually packaged
- New deluxe trim Buff-a-Balls are sold by the dozen



M149
Color: Cream/Black,
Cream/Red, Cream/Blue



Sand and polish your bowling ball's surface. Anyplace! Anytime!



Lasts 5 times
longer
than sandpaper!

M805SM | Surface Master Ball Maintenance System

Package Includes: Revolver Ball Ring, Surface Master Cup,
Removable Soft Touch Knob, Reversible Bonnet,
Abralon® Pads: 500 & 2000 grit



M805B
Surface Master Bonnet



M805C
Surface Master Cup



M805R
Revolver Ball Ring

SHOE GEAR



M320 | Tru-Slide™



2 3/4" x 4 1/2"

M508C Rental Shoe Spray

- Rental shoe deodorizer
- One dozen 15.5 oz cans per dozen
- 500 shoes per can!





M318F | Fuzzy Shoe Covers

Sizes: S/M, L

Colors: Fuchsia, Lavender, Rainbow



M319 | Master Shoe Covers

- Waterproof and fleece lined
- Sold by the pair

• Sizes: S, M, L, XL, XXL
Color: Black

SHOE COVER SIZING CHART

WOMEN'S

S/M	5 - 8
L	8.5 and above

MEN'S

S	4 - 5.5
M	6 - 8
L	8.5 - 10
XL	10.5 - 12.5
XXL	13 and above

M317 | Shoe Slide

- Neoprene
- Large (Size 7 - 9.5); X-Large (Size 10 - 13)
Color: Black



SHOE COVERS

TOWELS

M386C | MLB Baseball Team Towels

MLB Baseball Team Towels available with these logos but are subject to change.



M385C | NFL Football Team Towels



- Machine washable poly cotton
- Size: 16" x 25"



PRO SHOP



M777 | Bevel Sander

- High-speed electric sander with grounded cord and an assortment of 50 sanding discs
- 110V motor

M795 | 1 1/2" Sanding-Discs

- * 100 per package
- Top quality sanding discs fit any high-speed sander
- Available in 80, 100 & 120 grit

M796 | 1 3/4" Sanding-Discs

- * 100 per package
- Available in 100 grit



Kwik-Dam™

M725.CRL - 140 per box
M725.OVL - 100 per box

- Packaged in 100 ovals per box or 140 circles per box



Kwik Plug™ – Still the favorite with Pro Shops everywhere



Sensational 5 minute quick curing compound for plugging all bowling balls!

Kwik-Plug™ Kit

- 1 Gallon kit includes: 2 quarts Part A and 2 quarts Part B
- All kits include a generous quantity of assorted mixing cups and stir sticks
- Simple, 1:1 Mixing Ratio [no more guess work]

1 GALLON KITS

M745.BLK KWIK-PLUG BLACK KIT
M745.NAT KWIK-PLUG NATURAL KIT
M745.MIX KWIK-PLUG MIXED KIT

Individual quarts also sold separately

M746.BLK - Black
M746.NAT - Natural
M746.HRD - Hardener

M762 | Kwik-Plug™ Color Concentrate

- Highly concentrated soluble colors in 1 oz. bottles
- Available in 6 colors: royal blue, green, purple, maroon, black, yellow



M770 | Mixing Cups

- Package contains 100 cups, 50 each of 1 oz. and 8 oz. sizes

M771 | Stir Sticks

- Package contains 500 stir sticks

PRO SHOP



M789A | Grip Extractor

- Cutting edge is a full 360 degrees. Just sink the device and with one twist you have instantly removed the grip



M783 | Perfect Fit Tool

- Bevel Knife, Tape Removal and Workout Tool



High Strength Adhesives

M211 | Super Bond™

- Instantly secures all types of finger and thumb inserts

M212 | Adhesive Remover

- Removes excessive adhesive from surface of bowling ball without harm to surface

M730 | Kwik-Patch™ Kit

- Master Kwik-Patch™ Kit includes both Clear Filler and Accelerator

Also sold separately:

731 – Master Kwik-Patch™ Clear Filler

732 – Master Kwik-Patch™ Spray Accelerator



M776 | Bevel Knife

- A triangular 3-sided blade made of durable ground metal with strong nickel plated metal ferrules





STORM PRODUCTS, INC.
165 S. 800 W.
BRIGHAM CITY, UT 84302
800.369.4402